



**BNSF Benefits from Early Warning from WeatherData**

**We're the Best  
Because You Need  
Us to Be.**

We do whatever it takes to deliver accuracy and speed every time because we know the stakes are high:

**Your employees' safety.**

**Your bottom line.**

**Your commitment to your customers.**

**Just ask some of our clients.**

DaimlerChrysler

General Motors

Burlington Northern Santa Fe

Boeing

Toyota

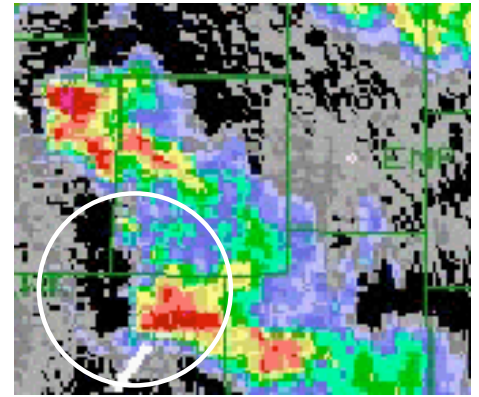
*"WeatherData issued an accurate tornado warning for one of our facilities when no one else had anything on it. We are very grateful to have that quality of service."*

*Bob Schmidt  
Manager of Building Services  
Wichita Clinic*

**The Story**

On the early morning hours of August 12, 2003 severe thunderstorms raked the El Dorado, KS area. SkyGuard® client Burlington Northern Santa Fe (BNSF) railroad had WeatherData warnings for the winds **before** they struck.

- 1:37 am (CDT): WeatherData issues a customized alert for BNSF track passing through Chelsea, KS, forecasting 60 mph winds. Chelsea is within 3 miles of El Dorado Lake.
- 1:54: WeatherData upgrades the alert to a 65 mph high wind warning.
- 1:56: WeatherData issues a 65 mph high wind warning for track in the city of El Dorado proper.
- 1:57: National Weather Service (NWS) issues a severe thunderstorm warning, mentioning 60 mph winds.
- 2:03: WeatherData raises both warning wind forecasts to 75 mph.
- 2:10-2:12: Winds to 80 mph strike El Dorado Lake, near Chelsea. Winds to 60 mph strike the city of El Dorado proper. Power is knocked out to 1,500 homes in El Dorado.
- The severe thunderstorm is circled on the image above.



National Weather Service radar image

**Results**

- The Chelsea area had over 30 minutes of lead time from the time of the first WeatherData alert until winds struck. The area had over 15 minutes from the time of the WeatherData warning until winds struck.
- El Dorado proper had 14 minutes of lead time before winds struck.
- Both locations received customized updates, including mention of 75 mph winds, as the situation evolved. BNSF has different procedures for different wind speeds. WeatherData allowed BNSF to make the right decisions at the right time.
- BNSF would not have had as much lead time from the NWS or a warning service based on NWS warnings.

**The SkyGuard® Promise**

We will provide our clients with **timely, site-specific warnings** based on their **unique business operational needs**. We are available to consult with our clients 24/7/365.

Our **Storm Intelligence Center**, comprised of the nation's top meteorologists, has **more than 123 years of combined experience** with severe weather. We are the leader in weather risk management because we believe in **blending human skill** and **state-of-the-art technology**.

Our team uses proven methods and techniques, strengthened by:

- Commitment to **understand business operations of our clients**.
- **22 years of saving lives** and millions of dollars for our clients.

**Put our Expertise to Work for You.** Don Coash, Senior Sales Consultant, [dcoash@weatherdata.com](mailto:dcoash@weatherdata.com)