

Tornado Roars through Union, Mississippi

WeatherData® client Kansas City Southern receives early warning

The Story

On April 6, 2005 afternoon severe thunderstorms pummeled exhausted residents of Mississippi after morning severe weather had already tested nerves with hours of tornado warnings. A damaging tornado moved through Union, MS. Fortunately Kansas City Southern (KCS), which has track in Union, received early warning from WeatherData's SkyGuard® system. KCS was able to proactively prepare for the approaching tornado using their customized track-specific WeatherData tornado warning. WeatherData provided KCS over 15 minutes of lead-time before the tornado struck.

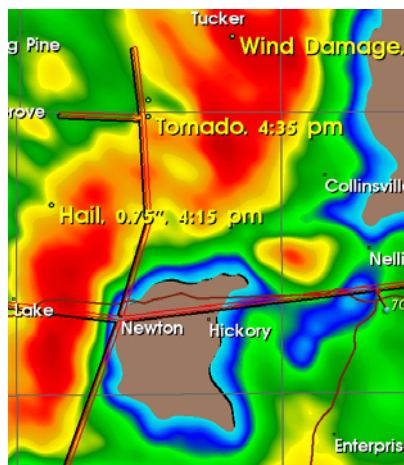
- **4:18 pm CDT:** WeatherData meteorologists discern the threat of a developing tornado on radar approaching KCS track. WeatherData issues a customized track-specific tornado warning for KCS track in Union, valid from 4:30 to 5:00 pm.
- **4:35 pm:** Emergency Management confirms a tornado touchdown in Union. The twister spreads debris around town and crosses KCS track.
- **5:00 pm:** WeatherData allows its tornado warning to expire, but notifies KCS that debris could be on track.

The Results

KCS received a **proactive** tornado warning from WeatherData, allowing time to prepare orderly for the event. WeatherData provided approximately 17 minutes of lead-time. The WeatherData warning was both **accurate** and **precise**, forecasting the tornado at the correct place and time. WeatherData's lead-time and precision can enhance safety before and during inclement weather and ensure quick business continuity after the storm.

For more information please call 316-265-9127 or visit www.weatherdata.com

Put WeatherData to work for you!



WeatherData SelectWarn® image of the severe thunderstorms: The tornado report is plotted right over Union, MS, with KCS track highlighted in red.

"Coupled with our severe weather operating processes, WeatherData's alerts and warnings saved a major derailment and greater damage here!"

Steve Millsap
Assistant Vice President of Structures
Burlington Northern Santa Fe Railway

"In May, WeatherData's proactive warning system prompted us to go out and inspect our track, even though the weather did not appear threatening at the time. We found more than 600 feet of track washed out by severe flooding with two trains scheduled to go through the area within the hour. Thanks to WeatherData's team and the SkyGuard® system we were able to avoid serious damage to the MNA trains and our equipment."

Thomas Murphy
Manager, ARDC
Rail America