

## Brandon, Mississippi Tornado Injures Six

WeatherData® client Kansas City Southern receives early warning

### The Story

On April 6, 2005 morning severe thunderstorms jarred residents of Mississippi. A destructive tornado ripped through Brandon, MS and surrounding areas. Six people were injured in the county. The tornado caused structural damage at a local high school under construction, but fortunately nobody was hurt there. Kansas City Southern (KCS), which has track in Brandon, received early warning from WeatherData's SkyGuard® system. KCS was able to proactively prepare for the developing tornado using their customized track-specific WeatherData tornado warning. WeatherData provided KCS over 30 minutes of lead-time before the tornado struck.

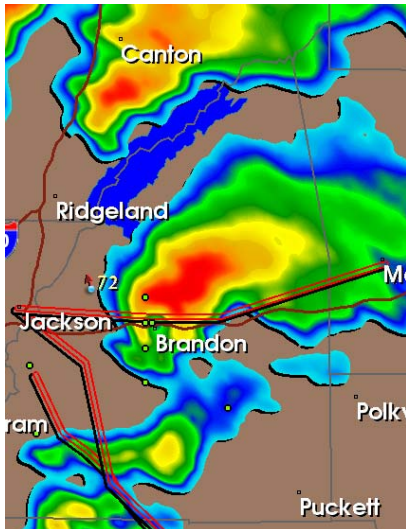
- **6:48 am CDT:** WeatherData meteorologists use their professional skills and exclusive technology to determine that a tornado will develop on KCS track. WeatherData issues a customized track-specific tornado warning for KCS track in Brandon, valid from 7:05 to 7:40 am.
- **7:25 am:** Six people are injured as the tornado enters southwest Brandon.
- **7:30 am:** The tornado damages the high school.
- **7:40 am:** The tornado moves past Kansas City Southern's right-of-way. Planning ahead was vital before the tornado.

### The Results

KCS received a **proactive** tornado warning from WeatherData, allowing time to prepare orderly for the event. WeatherData provided approximately 42 minutes of lead-time, exceeding our goal of 20 minutes. The WeatherData warning was both **accurate** and **precise**, forecasting the tornado at the correct place and time. WeatherData's lead-time and precision can enhance safety before and during inclement weather and ensure quick business continuity after the storm. As the high school example shows, having a **plan before** the storm enhances safety. With a complex business operation, WeatherData can be your partner, giving ample lead-time so you can **execute your plan** before severe weather strikes.

For more information please call 316-265-9127 or visit [www.weatherdata.com](http://www.weatherdata.com)

**Put WeatherData to work for you!**



WeatherData SelectWarn® image of the severe thunderstorms: Brandon is labeled on the map. Kansas City Southern's track is highlighted in red.

*"Coupled with our severe weather operating processes, WeatherData's alerts and warnings **saved a major derailment** and greater damage here!"*

Steve Millsap  
Assistant Vice President of Structures  
Burlington Northern Santa Fe Railway

*"In May, WeatherData's proactive warning system prompted us to go out and inspect our track, even though the weather did not appear threatening at the time. We found more than **600 feet of track washed out** by severe flooding with two trains scheduled to go through the area within the hour. Thanks to WeatherData's team and the SkyGuard® system we were able to avoid serious damage to the MNA trains and our equipment."*

Thomas Murphy  
Manager, ARDC  
Rail America